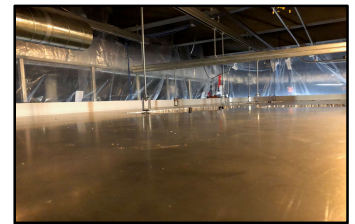
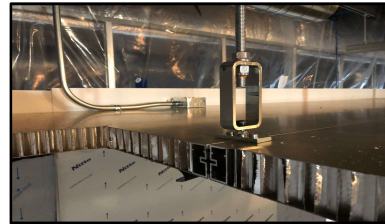




## INTEGRATED CLEANROOM & LABORATORY SOLUTIONS



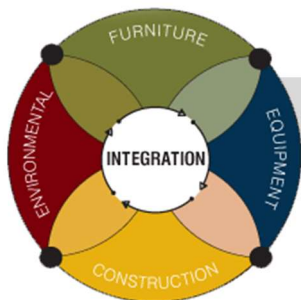
### Biopharma all Modular Walk-on Gridless Cleanroom Ceilings

Pre-engineered ceiling panels are designed and comply with Factory Mutual (FM) Approvals FM 4880 and 4882 for Class A or noncombustible construction which is also accredited by the Standards Council of Canada.

Modular panel design provides structural ceiling loading capacities for both dead and live loading capacities including the integration of ceiling devices like room side replaceable HEPA housings and light assemblies.

Flush walkable ceiling panels are constructed with aluminum extrusion edge construction with groove to facilitate joining of panels utilizing aluminum spline connector hardware. The panel comprises of a honeycomb core, galvanized steel skins with un-plasticized PVC (uPVC) finish on cleanroom side. The panels shall be demountable with fine line seams (cold welded).

Consult with our technical sales representative for optional room configurations and proposal options.



### COMBINED ENGINEERING SOLUTIONS – ONE CREATIVE VISION

120 Terence Matthews Crescent, Unit F1, Kanata, Ontario K2M 0J1  
**Ottawa Tel #:** (613) 366-4984 **Toronto Tel #:** (416) 477-4984 **Fax #:** (613) 831-4966  
info@hepaireproducts.com  
[www.hepaireproducts.com](http://www.hepaireproducts.com)